
Product Datasheet

DLAT Antibody (orb1241787)

Description

DLAT Antibody

Species/Host

Rabbit

Reactivity

Canine, Human, Mouse, Rat

Conjugation

Unconjugated

Tested Applications

ELISA, IHC, WB

Immunogen

Antibody produced in rabbits immunized with a synthetic peptide corresponding a region of human DLAT.

Target

DLAT

Preservatives

Purified antibody supplied in 1x PBS buffer with 0.09% (w/v) sodium azide and 2% sucrose.

Form/Appearance

Liquid

Concentration

batch dependent

Storage

For short periods of storage (days) store at 4°C. For longer periods of storage, store DLAT antibody at -20°C. As with any antibody avoid repeat freeze-thaw cycles.

Note

For research use only

Application notes

DLAT antibody can be used for detection of DLAT by ELISA at 1:312500. DLAT antibody can be used for detection of DLAT by western blot at 5.0 µg/mL, and HRP conjugated secondary antibody should be diluted 1:50,000 - 100,000.

Clonality

Polyclonal

MW

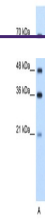
71 kDa

Uniprot ID
[Q86YI5](#)
NCBI
[NP_001922](#)
Dilution Range

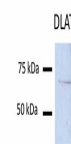
DLAT antibody can be used for detection of DLAT by ELISA at 1:312500. DLAT antibody can be used for detection of DLAT by western blot at 5.0 µg/mL, and HRP conjugated secondary antibody should be diluted 1:50,000 - 100,000.

Expiration Date

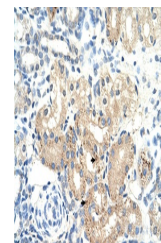
12 months from date of receipt.



Antibody used in WB on Human Jurkat 5.0 ...



Antibody used in WB on Human Huh7, HepG2...



Antibody used in IHC on Human Kidney at ...