
Product Datasheet

SLC2A5 Antibody (orb1241772)

Description

SLC2A5 Antibody

Species/Host

Rabbit

Reactivity

Human

Conjugation

Unconjugated

Tested

ELISA, WB

Applications
Immunogen

Antibody produced in rabbits immunized with a synthetic peptide corresponding a region of human SLC2A5.

Target

SLC2A5

Preservatives

Purified antibody supplied in 1x PBS buffer with 0.09% (w/v) sodium azide and 2% sucrose.

Form/Appearance

Liquid

Concentration

batch dependent

Storage

For short periods of storage (days) store at 4°C. For longer periods of storage, store SLC2A5 antibody at -20°C. As with any antibody avoid repeat freeze-thaw cycles.

Note

For research use only

Application notes

SLC2A5 antibody can be used for detection of SLC2A5 by ELISA at 1:62500. SLC2A5 antibody can be used for detection of SLC2A5 by western blot at 1.0 µg/mL, and HRP conjugated secondary antibody should be diluted 1:50,000 - 100,000.

Clonality

Polyclonal

MW

55 kDa

Uniprot ID
[P22732](#)
NCBI
[NP_003030](#)
Dilution Range

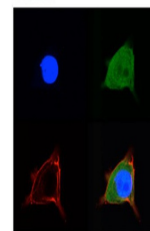
SLC2A5 antibody can be used for detection of SLC2A5 by ELISA at 1:62500. SLC2A5 antibody can be used for detection of SLC2A5 by western blot at 1.0 µg/mL, and HRP conjugated secondary antibody should be diluted 1:50,000 - 100,000.

Expiration Date

12 months from date of receipt.



Antibody used in WB on Human Jurkat 0.2-...



Antibody used in IF on Mouse HEI-OCI.