
Product Datasheet

PPAP2A Antibody (orb1241765)

Description

PPAP2A Antibody

Species/Host

Rabbit

Reactivity

Human, Mouse, Zebrafish

Conjugation

Unconjugated

Tested

ELISA, WB

Applications
Immunogen

Antibody produced in rabbits immunized with a synthetic peptide corresponding a region of human PPAP2A.

Target

PPAP2A

Preservatives

Purified antibody supplied in 1x PBS buffer with 0.09% (w/v) sodium azide and 2% sucrose.

Form/Appearance

Liquid

Concentration

batch dependent

Storage

For short periods of storage (days) store at 4°C. For longer periods of storage, store PPAP2A antibody at -20°C. As with any antibody avoid repeat freeze-thaw cycles.

Note

For research use only

Application notes

PPAP2A antibody can be used for detection of PPAP2A by ELISA at 1:62500. PPAP2A antibody can be used for detection of PPAP2A by western blot at 2.5 µg/mL, and HRP conjugated secondary antibody should be diluted 1:50,000 - 100,000.

Clonality

Polyclonal

MW

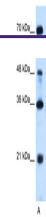
31 kDa, 32 kDa

Uniprot ID
[O14494](#)
NCBI
[NP_795714](#)
Dilution Range

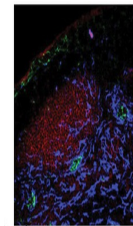
PPAP2A antibody can be used for detection of PPAP2A by ELISA at 1:62500. PPAP2A antibody can be used for detection of PPAP2A by western blot at 2.5 µg/mL, and HRP conjugated secondary antibody should be diluted 1:50,000 - 100,000.

Expiration Date

12 months from date of receipt.



Antibody used in WB on Human Jurkat 2.5 ...



Antibody used in IHC on Mouse at 125 ug/...