
Product Datasheet

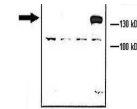
ACTN4 Antibody (orb1241756)

Description

ACTN4 Antibody

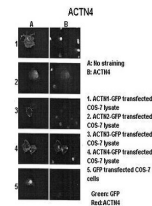
Species/Host	Rabbit
Reactivity	Canine, Human, Mouse, Rat
Conjugation	Unconjugated
Tested Applications	ELISA, WB
Immunogen	Antibody produced in rabbits immunized with a synthetic peptide corresponding a region of human Actin alpha 4.
Target	ACTN4
Preservatives	Purified antibody supplied in 1x PBS buffer with 0.09% (w/v) sodium azide and 2% sucrose.
Form/Appearance	Liquid
Concentration	batch dependent
Storage	For short periods of storage (days) store at 4°C. For longer periods of storage, store Actin alpha 4 antibody at -20°C. As with any antibody avoid repeat freeze-thaw cycles.
Note	For research use only
Application notes	Actin alpha 4 antibody can be used for detection of Actin alpha 4 by ELISA at 1:312500. Actin alpha 4 antibody can be used for detection of Actin alpha 4 by western blot at 0.625 µg/mL, and HRP conjugated secondary antibody should be diluted 1:50,000 - 100,000.
Clonality	Polyclonal
MW	100 kDa
Uniprot ID	O43707
NCBI	NP_004915
Dilution Range	Actin alpha 4 antibody can be used for detection of Actin alpha 4 by ELISA at 1:312500. Actin alpha 4 antibody can be used for detection of Actin alpha 4 by western blot at 0.625 µg/mL, and HRP conjugated secondary antibody should be diluted 1:50,000 - 100,000.
Expiration Date	12 months from date of receipt.

ACTN4



See associated 2 Data and Customer Feedback for more information

Antibody used in WB on ACTNX-GFP transfected...



See IHC 1 Data and Customer Feedback for more information

Antibody used in IHC on ACTNX-GFP transf...



Antibody used in WB on Human HCT116 at 0...