
Product Datasheet

RAD23A Antibody (orb1241753)

Description

RAD23A Antibody

Species/Host

Rabbit

Reactivity

Canine, Human, Mouse, Rat

Conjugation

Unconjugated

Tested

ELISA, IHC, WB

Applications
Immunogen

Antibody produced in rabbits immunized with a synthetic peptide corresponding a region of human RAD23A.

Target

RAD23A

Preservatives

Purified antibody supplied in 1x PBS buffer with 0.09% (w/v) sodium azide and 2% sucrose.

Form/Appearance

Liquid

Concentration

batch dependent

Storage

For short periods of storage (days) store at 4°C. For longer periods of storage, store RAD23A antibody at -20°C. As with any antibody avoid repeat freeze-thaw cycles.

Note

For research use only

Application notes

RAD23A antibody can be used for detection of RAD23A by ELISA at 1:62500. RAD23A antibody can be used for detection of RAD23A by western blot at 2.5 µg/mL, and HRP conjugated secondary antibody should be diluted 1:50,000 - 100,000.

Clonality

Polyclonal

MW

40 kDa

Uniprot ID
[P54725](#)
NCBI
[NP_005044](#)
Dilution Range

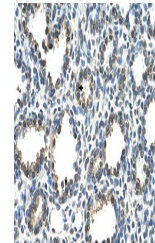
RAD23A antibody can be used for detection of RAD23A by ELISA at 1:62500. RAD23A antibody can be used for detection of RAD23A by western blot at 2.5 µg/mL, and HRP conjugated secondary antibody should be diluted 1:50,000 - 100,000.

Expiration Date

12 months from date of receipt.



Antibody used in WB on Human Jurkat 2.5 ...



Antibody used in IHC on Human Lung at 4...