
Product Datasheet

GEM Antibody (orb1241750)

Description

GEM Antibody

Species/Host

Rabbit

Reactivity

Canine, Human, Mouse, Rat

Conjugation

Unconjugated

Tested

ELISA, IHC, WB

Applications
Immunogen

Antibody produced in rabbits immunized with a synthetic peptide corresponding a region of human GEM.

Target

GEM

Preservatives

Purified antibody supplied in 1x PBS buffer with 0.09% (w/v) sodium azide and 2% sucrose.

Form/Appearance

Liquid

Concentration

batch dependent

Storage

For short periods of storage (days) store at 4°C. For longer periods of storage, store GEM antibody at -20°C. As with any antibody avoid repeat freeze-thaw cycles.

Note

For research use only

Application notes

GEM antibody can be used for detection of GEM by ELISA at 1:312500. GEM antibody can be used for detection of GEM by western blot at 2.5 µg/mL, and HRP conjugated secondary antibody should be diluted 1:50,000 - 100,000.

Clonality

Polyclonal

MW

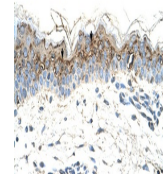
33 kDa, 34 kDa

Uniprot ID
[P55040](#)
NCBI
[NP_005252](#)
Dilution Range

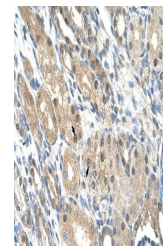
GEM antibody can be used for detection of GEM by ELISA at 1:312500. GEM antibody can be used for detection of GEM by western blot at 2.5 µg/mL, and HRP conjugated secondary antibody should be diluted 1:50,000 - 100,000.

Expiration Date

12 months from date of receipt.



Antibody used in IHC on Human skin at 4....



Antibody used in IHC on Human Kidney at ...



Antibody used in WB on Human HepG2 at 2....