

---

## Product Datasheet

### CLEC4M Antibody (orb1241722)

**Description**

CLEC4M Antibody

**Species/Host**

Rabbit

**Reactivity**

Human

**Conjugation**

Unconjugated

**Tested**

ELISA, IHC, WB

**Applications**
**Immunogen**

Antibody produced in rabbits immunized with a synthetic peptide corresponding a region of human CLEC4M.

**Target**

CLEC4M

**Preservatives**

Purified antibody supplied in 1x PBS buffer with 0.09% (w/v) sodium azide and 2% sucrose.

**Form/Appearance**

Liquid

**Concentration**

batch dependent

**Storage**

For short periods of storage (days) store at 4°C. For longer periods of storage, store CLEC4M antibody at -20°C. As with any antibody avoid repeat freeze-thaw cycles.

**Note**

For research use only

**Application notes**

CLEC4M antibody can be used for detection of CLEC4M by ELISA at 1:312500. CLEC4M antibody can be used for detection of CLEC4M by western blot at 1.25 µg/mL, and HRP conjugated secondary antibody should be diluted 1:50,000 - 100,000.

**Clonality**

Polyclonal

**MW**

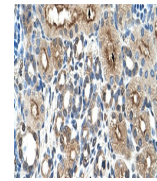
44 kDa, 45 kDa, 43 kDa, 30 kDa, 30 kDa, 28 kDa

**Uniprot ID**
[Q9H2X3](#)
**NCBI**
[NP\\_055072](#)
**Dilution Range**

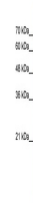
CLEC4M antibody can be used for detection of CLEC4M by ELISA at 1:312500. CLEC4M antibody can be used for detection of CLEC4M by western blot at 1.25 µg/mL, and HRP conjugated secondary antibody should be diluted 1:50,000 - 100,000.

**Expiration Date**

12 months from date of receipt.



Antibody used in IHC on Human kidney.



Antibody used in WB on Human HepG2 at 1....