

---

## Product Datasheet

### ASPEN Antibody (orb1241709)

**Description**

ASPN Antibody

**Species/Host**

Rabbit

**Reactivity**

Human, Rat

**Conjugation**

Unconjugated

**Tested Applications**

ELISA, IHC, WB

**Immunogen**

Antibody produced in rabbits immunized with a synthetic peptide corresponding a region of human ASPN.

**Target**

ASPN

**Preservatives**

Purified antibody supplied in 1x PBS buffer with 0.09% (w/v) sodium azide and 2% sucrose.

**Form/Appearance**

Liquid

**Concentration**

batch dependent

**Storage**

For short periods of storage (days) store at 4°C. For longer periods of storage, store ASPN antibody at -20°C. As with any antibody avoid repeat freeze-thaw cycles.

**Note**

For research use only

**Application notes**

ASPN antibody can be used for detection of ASPN by ELISA at 1:1562500. ASPN antibody can be used for detection of ASPN by western blot at 2.5 µg/mL, and HRP conjugated secondary antibody should be diluted 1:50,000 - 100,000.

**Clonality**

Polyclonal

**MW**

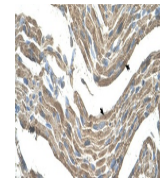
42 kDa

**Uniprot ID**
[Q5TBF3](#)
**NCBI**
[NP\\_060150](#)
**Dilution Range**

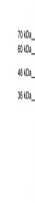
ASPN antibody can be used for detection of ASPN by ELISA at 1:1562500. ASPN antibody can be used for detection of ASPN by western blot at 2.5 µg/mL, and HRP conjugated secondary antibody should be diluted 1:50,000 - 100,000.

**Expiration Date**

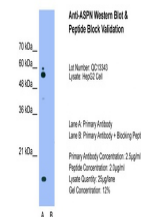
12 months from date of receipt.



Antibody used in IHC on Human Muscle.



Antibody used in WB on Human HepG2 at 2....



Antibody used in WB on HepG2 at 2.5 ug/m...