

Product Datasheet

RSAD2 Antibody (orb1241677)

Description

RSAD2 Antibody

Species/Host

Rabbit

Reactivity

Canine, Human, Mouse, Zebrafish

Conjugation

Unconjugated

Tested

ELISA, IHC, WB

Applications
Immunogen

Antibody produced in rabbits immunized with a synthetic peptide corresponding a region of human RSAD2.

Target

RSAD2

Preservatives

Purified antibody supplied in 1x PBS buffer with 0.09% (w/v) sodium azide and 2% sucrose.

Form/Appearance

Liquid

Concentration

batch dependent

Storage

For short periods of storage (days) store at 4°C. For longer periods of storage, store RSAD2 antibody at -20°C. As with any antibody avoid repeat freeze-thaw cycles.

Note

For research use only

Application notes

RSAD2 antibody can be used for detection of RSAD2 by ELISA at 1:312500. RSAD2 antibody can be used for detection of RSAD2 by western blot at 5.0 µg/mL, and HRP conjugated secondary antibody should be diluted 1:50,000 - 100,000.

Clonality

Polyclonal

MW

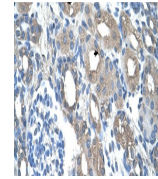
40 kDa

Uniprot ID
[Q8WXG1](#)
NCBI
[NP_542388](#)
Dilution Range

RSAD2 antibody can be used for detection of RSAD2 by ELISA at 1:312500. RSAD2 antibody can be used for detection of RSAD2 by western blot at 5.0 µg/mL, and HRP conjugated secondary antibody should be diluted 1:50,000 - 100,000.

Expiration Date

12 months from date of receipt.



Antibody used in IHC on Human kidney.



Antibody used in WB on Human Jurkat 5.0 ...