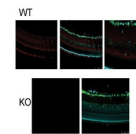

Product Datasheet

PANX1 Antibody (orb1241670)

Description	PANX1 Antibody
Species/Host	Rabbit
Reactivity	Human
Conjugation	Unconjugated
Tested Applications	ELISA, IHC, WB
Immunogen	Antibody produced in rabbits immunized with a synthetic peptide corresponding a region of human PANX1.
Target	PANX1
Preservatives	Purified antibody supplied in 1x PBS buffer with 0.09% (w/v) sodium azide and 2% sucrose.
Form/Appearance	Liquid
Concentration	batch dependent
Storage	For short periods of storage (days) store at 4°C. For longer periods of storage, store PANX1 antibody at -20°C. As with any antibody avoid repeat freeze-thaw cycles.
Note	For research use only
Application notes	PANX1 antibody can be used for detection of PANX1 by ELISA at 1:62500. PANX1 antibody can be used for detection of PANX1 by western blot at 1.0 µg/mL, and HRP conjugated secondary antibody should be diluted 1:50,000 - 100,000.
Clonality	Polyclonal
MW	47 kDa
Uniprot ID	Q96RD7
NCBI	NP_056183
Dilution Range	PANX1 antibody can be used for detection of PANX1 by ELISA at 1:62500. PANX1 antibody can be used for detection of PANX1 by western blot at 1.0 µg/mL, and HRP conjugated secondary antibody should be diluted 1:50,000 - 100,000.
Expiration Date	12 months from date of receipt.

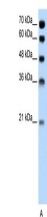


Antibody used in IHC on Human Intestine.



Legend
Magenta = DAPI for all nuclei
Green = structural nuclei
**all PANX1 labeling is in the red channel

Antibody used in IHC on mouse retina and...



Antibody used in WB on Human Jurkat 0.2-...