
Product Datasheet

UBE2D2 Antibody (orb1241651)

Description

UBE2D2 Antibody

Species/Host

Rabbit

Reactivity

Canine, Human, Mouse, Rat

Conjugation

Unconjugated

Tested

ELISA, IHC, WB

Applications
Immunogen

Antibody produced in rabbits immunized with a synthetic peptide corresponding a region of human UBE2D2.

Target

UBE2D2

Preservatives

Purified antibody supplied in 1x PBS buffer with 0.09% (w/v) sodium azide and 2% sucrose.

Form/Appearance

Liquid

Concentration

batch dependent

Storage

For short periods of storage (days) store at 4°C. For longer periods of storage, store UBE2D2 antibody at -20°C. As with any antibody avoid repeat freeze-thaw cycles.

Note

For research use only

Application notes

UBE2D2 antibody can be used for detection of UBE2D2 by ELISA at 1:1562500. UBE2D2 antibody can be used for detection of UBE2D2 by western blot at 1.25 µg/mL, and HRP conjugated secondary antibody should be diluted 1:50,000 - 100,000.

Clonality

Polyclonal

MW

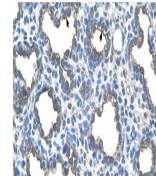
60 kDa, 61 kDa

Uniprot ID
[P62837](#)
NCBI
[NP_003330](#)
Dilution Range

UBE2D2 antibody can be used for detection of UBE2D2 by ELISA at 1:1562500. UBE2D2 antibody can be used for detection of UBE2D2 by western blot at 1.25 µg/mL, and HRP conjugated secondary antibody should be diluted 1:50,000 - 100,000.

Expiration Date

12 months from date of receipt.



Antibody used in IHC on Human Lung.



Antibody used in WB on Human Jurkat 1.25...