
Product Datasheet

RNF40 Antibody (orb1241628)

Description

RNF40 Antibody

Species/Host

Rabbit

Reactivity

Canine, Human, Mouse, Rat

Conjugation

Unconjugated

Tested

ELISA, IHC, WB

Applications
Immunogen

Antibody produced in rabbits immunized with a synthetic peptide corresponding a region of human RNF40.

Target

RNF40

Preservatives

Purified antibody supplied in 1x PBS buffer with 0.09% (w/v) sodium azide and 2% sucrose.

Form/Appearance

Liquid

Concentration

batch dependent

Storage

For short periods of storage (days) store at 4°C. For longer periods of storage, store RNF40 antibody at -20°C. As with any antibody avoid repeat freeze-thaw cycles.

Note

For research use only

Application notes

RNF40 antibody can be used for detection of RNF40 by ELISA at 1:312500. RNF40 antibody can be used for detection of RNF40 by western blot at 1.25 µg/mL, and HRP conjugated secondary antibody should be diluted 1:50,000 - 100,000.

Clonality

Polyclonal

MW

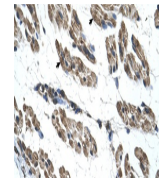
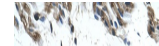
114 kDa

Uniprot ID
[O75150](#)
NCBI
[NP_055586](#)
Dilution Range

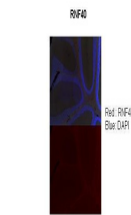
RNF40 antibody can be used for detection of RNF40 by ELISA at 1:312500. RNF40 antibody can be used for detection of RNF40 by western blot at 1.25 µg/mL, and HRP conjugated secondary antibody should be diluted 1:50,000 - 100,000.

Expiration Date

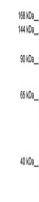
12 months from date of receipt.



Antibody used in IHC on Human Muscle.


See IHC, WB and Customer Feedback for more information

Antibody used in IHC on Adult mouse cere...



Antibody used in WB on Human 293T at 1.2...