
Product Datasheet

RNF39 Antibody (orb1241617)

Description

RNF39 Antibody

Species/Host

Rabbit

Reactivity

Human

Conjugation

Unconjugated

Tested

ELISA, IHC, WB

Applications
Immunogen

Antibody produced in rabbits immunized with a synthetic peptide corresponding a region of human RNF39.

Target

RNF39

Preservatives

Purified antibody supplied in 1x PBS buffer with 0.09% (w/v) sodium azide and 2% sucrose.

Form/Appearance

Liquid

Concentration

batch dependent

Storage

For short periods of storage (days) store at 4°C. For longer periods of storage, store RNF39 antibody at -20°C. As with any antibody avoid repeat freeze-thaw cycles.

Note

For research use only

Application notes

RNF39 antibody can be used for detection of RNF39 by ELISA at 1:312500. RNF39 antibody can be used for detection of RNF39 by western blot at 1.0 µg/mL, and HRP conjugated secondary antibody should be diluted 1:50,000 - 100,000.

Clonality

Polyclonal

MW

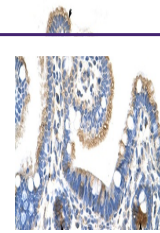
39 kDa, 46 kDa

Uniprot ID
[A2BEK3](#)
NCBI
[NP_739575](#)
Dilution Range

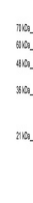
RNF39 antibody can be used for detection of RNF39 by ELISA at 1:312500. RNF39 antibody can be used for detection of RNF39 by western blot at 1.0 µg/mL, and HRP conjugated secondary antibody should be diluted 1:50,000 - 100,000.

Expiration Date

12 months from date of receipt.



Antibody used in IHC on Human Intestine.



Antibody used in WB on Human Jurkat 0.2-...