
Product Datasheet

SLC26A8 Antibody (orb1241527)

Description

SLC26A8 Antibody

Species/Host

Rabbit

Reactivity

Human

Conjugation

Unconjugated

Tested

ELISA, IHC, WB

Applications
Immunogen

Antibody produced in rabbits immunized with a synthetic peptide corresponding a region of human SLC26A8.

Target

SLC26A8

Preservatives

Purified antibody supplied in 1x PBS buffer with 0.09% (w/v) sodium azide and 2% sucrose.

Form/Appearance

Liquid

Concentration

batch dependent

Storage

For short periods of storage (days) store at 4°C. For longer periods of storage, store SLC26A8 antibody at -20°C. As with any antibody avoid repeat freeze-thaw cycles.

Note

For research use only

Application notes

SLC26A8 antibody can be used for detection of SLC26A8 by ELISA at 1:1562500. SLC26A8 antibody can be used for detection of SLC26A8 by western blot at 5.0 µg/mL, and HRP conjugated secondary antibody should be diluted 1:50,000 - 100,000.

Clonality

Polyclonal

MW

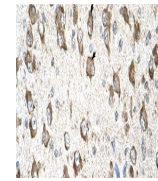
61 kDa, 109 kDa, 97 kDa

Uniprot ID
[Q5JVR5](#)
NCBI
[CAI40882](#)
Dilution Range

SLC26A8 antibody can be used for detection of SLC26A8 by ELISA at 1:1562500. SLC26A8 antibody can be used for detection of SLC26A8 by western blot at 5.0 µg/mL, and HRP conjugated secondary antibody should be diluted 1:50,000 - 100,000.

Expiration Date

12 months from date of receipt.



Antibody used in IHC on Human Brain.



Antibody used in WB on Human Jurkat 5.0 ...