
Product Datasheet

SLC15A4 Antibody (orb1241525)

Description

SLC15A4 Antibody

Species/Host

Rabbit

Reactivity

Human

Conjugation

Unconjugated

Tested

ELISA, IHC, WB

Applications
Immunogen

Antibody produced in rabbits immunized with a synthetic peptide corresponding a region of human SLC15A4.

Target

SLC15A4

Preservatives

Purified antibody supplied in 1x PBS buffer with 0.09% (w/v) sodium azide and 2% sucrose.

Form/Appearance

Liquid

Concentration

batch dependent

Storage

For short periods of storage (days) store at 4°C. For longer periods of storage, store SLC15A4 antibody at -20°C. As with any antibody avoid repeat freeze-thaw cycles.

Note

For research use only

Application notes

SLC15A4 antibody can be used for detection of SLC15A4 by ELISA at 1:312500. SLC15A4 antibody can be used for detection of SLC15A4 by western blot at 0.25 µg/mL, and HRP conjugated secondary antibody should be diluted 1:50,000 - 100,000.

Clonality

Polyclonal

MW

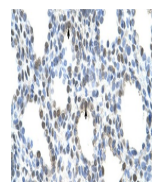
62 kDa

Uniprot ID
[Q8N697](#)
NCBI
[NP_663623](#)
Dilution Range

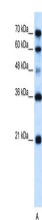
SLC15A4 antibody can be used for detection of SLC15A4 by ELISA at 1:312500. SLC15A4 antibody can be used for detection of SLC15A4 by western blot at 0.25 µg/mL, and HRP conjugated secondary antibody should be diluted 1:50,000 - 100,000.

Expiration Date

12 months from date of receipt.



Antibody used in IHC on Human Lung.



Antibody used in WB on Human HepG2 at 0....