
Product Datasheet

SOD1 Antibody (orb1241406)

Description

SOD1 Antibody

Species/Host

Rabbit

Reactivity

Human

Conjugation

Unconjugated

Tested

ELISA, IHC, WB

Applications
Immunogen

Antibody produced in rabbits immunized with a synthetic peptide corresponding a region of human SOD1.

Target

SOD1

Preservatives

Purified antibody supplied in 1x PBS buffer with 0.09% (w/v) sodium azide and 2% sucrose.

Form/Appearance

Liquid

Concentration

batch dependent

Storage

For short periods of storage (days) store at 4°C. For longer periods of storage, store SOD1 antibody at -20°C. As with any antibody avoid repeat freeze-thaw cycles.

Note

For research use only

Application notes

SOD1 antibody can be used for detection of SOD1 by ELISA at 1:312500. SOD1 antibody can be used for detection of SOD1 by western blot at 2.5 µg/mL, and HRP conjugated secondary antibody should be diluted 1:50,000 - 100,000.

Clonality

Polyclonal

MW

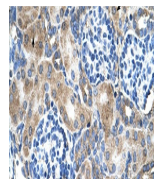
16 kDa

Uniprot ID
[P00441](https://www.uniprot.org/uniprot/P00441)
NCBI
[NP_000445](https://www.ncbi.nlm.nih.gov/nuccore/NP_000445)
Dilution Range

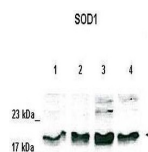
SOD1 antibody can be used for detection of SOD1 by ELISA at 1:312500. SOD1 antibody can be used for detection of SOD1 by western blot at 2.5 µg/mL, and HRP conjugated secondary antibody should be diluted 1:50,000 - 100,000.

Expiration Date

12 months from date of receipt.



Antibody used in IHC on Human kidney.



See Immunoblot Data and Customer Feedback for more information

Antibody used in WB on Human cell lines ...



Antibody used in WB on Human Jurkat 2.5 ...