
Product Datasheet

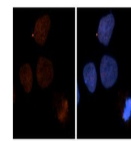
USP16 Antibody (orb1241403)

Description	USP16 Antibody
Species/Host	Rabbit
Reactivity	Human
Conjugation	Unconjugated
Tested Applications	ELISA, WB
Immunogen	Antibody produced in rabbits immunized with a synthetic peptide corresponding a region of human USP16.
Target	USP16
Preservatives	Purified antibody supplied in 1x PBS buffer with 0.09% (w/v) sodium azide and 2% sucrose.
Form/Appearance	Liquid
Concentration	batch dependent
Storage	For short periods of storage (days) store at 4°C. For longer periods of storage, store USP16 antibody at -20°C. As with any antibody avoid repeat freeze-thaw cycles.
Note	For research use only
Application notes	USP16 antibody can be used for detection of USP16 by ELISA at 1:12500. USP16 antibody can be used for detection of USP16 by western blot at 2.5 µg/mL, and HRP conjugated secondary antibody should be diluted 1:50,000 - 100,000.
Clonality	Polyclonal
MW	44 kDa
Uniprot ID	Q5VKN8
NCBI	AAR13293
Dilution Range	USP16 antibody can be used for detection of USP16 by ELISA at 1:12500. USP16 antibody can be used for detection of USP16 by western blot at 2.5 µg/mL, and HRP conjugated secondary antibody should be diluted 1:50,000 - 100,000.
Expiration Date	12 months from date of receipt.



Antibody used in WB on Human HepG2 at 2....

USP16



Red: USP16
Blue: DAPI

See POC 1 Data and Customer Feedback for more information

Antibody used in IHC on Human brain stem...