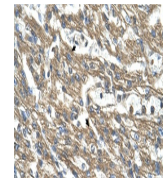
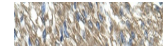
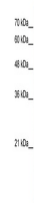

Product Datasheet

CTH Antibody (orb1241373)

Description	CTH Antibody
Species/Host	Rabbit
Reactivity	Human
Conjugation	Unconjugated
Tested Applications	ELISA, IHC, WB
Immunogen	Antibody produced in rabbits immunized with a synthetic peptide corresponding a region of human CTH.
Target	CTH
Preservatives	Purified antibody supplied in 1x PBS buffer with 0.09% (w/v) sodium azide and 2% sucrose.
Form/Appearance	Liquid
Concentration	batch dependent
Storage	For short periods of storage (days) store at 4°C. For longer periods of storage, store CTH antibody at -20°C. As with any antibody avoid repeat freeze-thaw cycles.
Note	For research use only
Application notes	CTH antibody can be used for detection of CTH by ELISA at 1:312500. CTH antibody can be used for detection of CTH by western blot at 2.5 µg/mL, and HRP conjugated secondary antibody should be diluted 1:50,000 - 100,000.
Clonality	Polyclonal
MW	44 kDa, 40 kDa
Uniprot ID	P32929
NCBI	NP_001893
Dilution Range	CTH antibody can be used for detection of CTH by ELISA at 1:312500. CTH antibody can be used for detection of CTH by western blot at 2.5 µg/mL, and HRP conjugated secondary antibody should be diluted 1:50,000 - 100,000.
Expiration Date	12 months from date of receipt.



Antibody used in IHC on Human Heart.



Antibody used in WB on Human HepG2 at 2....