

Product Datasheet

PPAT Antibody (orb1241369)

Description	PPAT Antibody
Species/Host	Rabbit
Reactivity	Human
Conjugation	Unconjugated
Tested Applications	ELISA, IHC, WB
Immunogen	Antibody produced in rabbits immunized with a synthetic peptide corresponding a region of human PPAT.
Target	PPAT
Preservatives	Purified antibody supplied in 1x PBS buffer with 0.09% (w/v) sodium azide and 2% sucrose.
Form/Appearance	Liquid
Concentration	batch dependent
Storage	Maintain refrigerated at 2-8°C for up to 2 weeks. For long term storage store at -20°C in small aliquots to prevent freeze-thaw cycles.
Note	For research use only
Application notes	PPAT antibody can be used for detection of PPAT by ELISA at 1:62500. PPAT antibody can be used for detection of PPAT by western blot at 0.25 µg/mL, and HRP conjugated secondary antibody should be diluted 1:50,000 - 100,000.
Clonality	Polyclonal
MW	56 kDa
Uniprot ID	Q06203

Biorbyt Ltd.

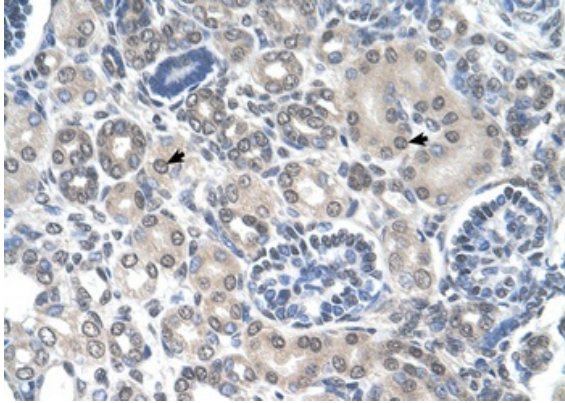
7 Signet Court, Swann's Road,
Cambridge, CB5 8LA, United Kingdom
Email: info@biorbyt.com, support@biorbyt.com
Phone: [+44 \(0\) 1223 859-353](tel:+44(0)1223859353) | Fax: [+1 \(415\) 651-8558](tel:+1(415)6518558)

Biorbyt LLC.

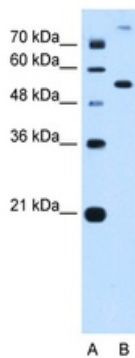
68 TW Alexander Drive,
Durham, NC, 27713, United States
Email: info@biorbyt.com, support@biorbyt.com
Phone: [+1 \(415\) 906-5211](tel:+1(415)9065211) | Fax: [+1 \(415\) 651-8558](tel:+1(415)6518558)

NCBI**NP_002694****Expiration Date**

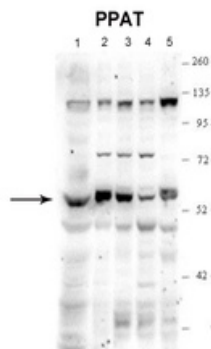
12 months from date of receipt.



Antibody used in IHC on Human kidney.



Antibody used in WB on Human HepG2 at 0.25 ug/ml.



See Immunoblot 2 Data and Customer Feedback tab for more information.

Antibody used in WB on Human, Hamster at 1:5000.

Biorbyt Ltd.7 Signet Court, Swann's Road,
Cambridge, CB5 8LA, United KingdomEmail: info@biorbyt.com, support@biorbyt.comPhone: [+44 \(0\) 1223 859-353](tel:+44(0)1223859353) | Fax: [+1 \(415\) 651-8558](tel:+1(415)6518558)**Biorbyt LLC.**68 TW Alexander Drive,
Durham, NC, 27713, United StatesEmail: info@biorbyt.com, support@biorbyt.comPhone: [+1 \(415\) 906-5211](tel:+1(415)9065211) | Fax: [+1 \(415\) 651-8558](tel:+1(415)6518558)