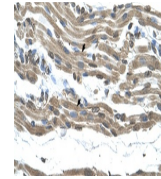
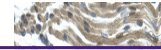
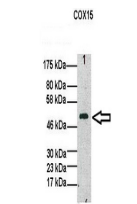

Product Datasheet

COX15 Antibody (orb1241319)

Description	COX15 Antibody
Species/Host	Rabbit
Reactivity	Human
Conjugation	Unconjugated
Tested Applications	ELISA, IHC, WB
Immunogen	Antibody produced in rabbits immunized with a synthetic peptide corresponding a region of human COX15.
Target	COX15
Preservatives	Purified antibody supplied in 1x PBS buffer with 0.09% (w/v) sodium azide and 2% sucrose.
Form/Appearance	Liquid
Concentration	batch dependent
Storage	For short periods of storage (days) store at 4°C. For longer periods of storage, store COX15 antibody at -20°C. As with any antibody avoid repeat freeze-thaw cycles.
Note	For research use only
Application notes	COX15 antibody can be used for detection of COX15 by ELISA at 1:62500. COX15 antibody can be used for detection of COX15 by western blot at 5.0 µg/mL, and HRP conjugated secondary antibody should be diluted 1:50,000 - 100,000.
Clonality	Polyclonal
MW	44 kDa, 46 kDa
Uniprot ID	Q7KZN9
NCBI	NP_004367
Dilution Range	COX15 antibody can be used for detection of COX15 by ELISA at 1:62500. COX15 antibody can be used for detection of COX15 by western blot at 5.0 µg/mL, and HRP conjugated secondary antibody should be diluted 1:50,000 - 100,000.
Expiration Date	12 months from date of receipt.



Antibody used in IHC on Human Muscle at ...



See Immunoblot 2 Data and Customer Feedback for more information

Antibody used in WB on Human fibroblast ...



Antibody used in WB on Human HepG2 cells...