

---

## Product Datasheet

### EFCAB14 Antibody (orb1241261)

**Description**

EFCAB14 Antibody


**Species/Host**

Rabbit

**Reactivity**

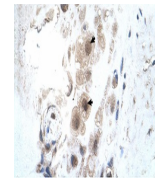
Canine, Human, Mouse, Rat

**Conjugation**

Unconjugated

**Tested**

ELISA, IHC, WB

**Applications**


Antibody used in IHC on Human Placenta.

**Immunogen**

Antibody produced in rabbits immunized with a synthetic peptide corresponding a region of human KIAA0494.

**Target**

EFCAB14

**Preservatives**

Purified antibody supplied in 1x PBS buffer with 0.09% (w/v) sodium azide and 2% sucrose.

**Form/Appearance**

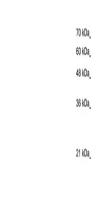
Liquid

**Concentration**

batch dependent

**Storage**

For short periods of storage (days) store at 4°C. For longer periods of storage, store KIAA0494 antibody at -20°C. As with any antibody avoid repeat freeze-thaw cycles.



Antibody used in WB on Human HepG2 at 5....

**Note**

For research use only

**Application notes**

KIAA0494 antibody can be used for detection of KIAA0494 by ELISA at 1:62500. KIAA0494 antibody can be used for detection of KIAA0494 by western blot at 5.0 µg/mL, and HRP conjugated secondary antibody should be diluted 1:50,000 - 100,000.

**Clonality**

Polyclonal

**MW**

55 kDa

**Uniprot ID**
[O75071](#)
**NCBI**
[NP\\_055589](#)
**Dilution Range**

KIAA0494 antibody can be used for detection of KIAA0494 by ELISA at 1:62500. KIAA0494 antibody can be used for detection of KIAA0494 by western blot at 5.0 µg/mL, and HRP conjugated secondary antibody should be diluted 1:50,000 - 100,000.

**Expiration Date**

12 months from date of receipt.