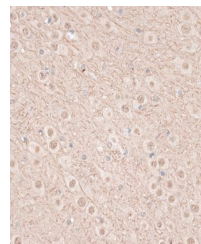


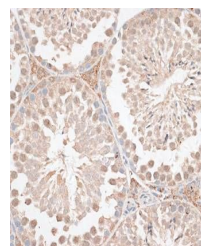
Product Datasheet

KDR antibody (orb12412)

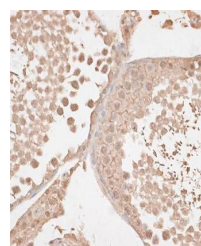
Description	Rabbit polyclonal antibody to KDR
Reactivity	Human, Mouse, Rat
Conjugation	Unconjugated
Tested Applications	IHC, WB
Immunogen	Recombinant fusion protein of human VEGF Receptor 2(NP_002244.1).
Preservatives	PBS with 0.02% sodium azide,50% glycerol,pH7.3.
Storage	Maintain refrigerated at 2-8°C for up to 2 weeks. For long term storage store at -20°C in small aliquots to prevent freeze-thaw cycles.
Note	For research use only
Isotype	IgG
Clonality	Polyclonal
MW	210KDa/230KDa
Uniprot ID	P35968
Dilution Range	WB: 1:500-1:2000
Expiration Date	12 months from date of receipt.



Immunohistochemical staining of mouse br...



Immunohistochemical staining of mouse te...



Immunohistochemical staining of rat test...