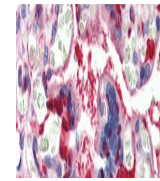


---

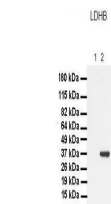
## Product Datasheet

### LDHB Antibody (orb1241148)

<b>Description</b>	LDHB Antibody
<b>Species/Host</b>	Rabbit
<b>Reactivity</b>	Human
<b>Conjugation</b>	Unconjugated
<b>Tested Applications</b>	ELISA, WB
<b>Immunogen</b>	Antibody produced in rabbits immunized with a synthetic peptide corresponding a region of human LDHB.
<b>Target</b>	LDHB
<b>Preservatives</b>	Purified antibody supplied in 1x PBS buffer with 0.09% (w/v) sodium azide and 2% sucrose.
<b>Form/Appearance</b>	Liquid
<b>Concentration</b>	batch dependent
<b>Storage</b>	For short periods of storage (days) store at 4°C. For longer periods of storage, store LDHB antibody at -20°C. As with any antibody avoid repeat freeze-thaw cycles.
<b>Note</b>	For research use only
<b>Application notes</b>	LDHB antibody can be used for detection of LDHB by ELISA at 1:62500. LDHB antibody can be used for detection of LDHB by western blot at 1 µg/mL, and HRP conjugated secondary antibody should be diluted 1:50,000 - 100,000.
<b>Clonality</b>	Polyclonal
<b>MW</b>	37 kDa
<b>Uniprot ID</b>	<a href="#">P07195</a>
<b>NCBI</b>	<a href="#">NP_002291</a>
<b>Dilution Range</b>	LDHB antibody can be used for detection of LDHB by ELISA at 1:62500. LDHB antibody can be used for detection of LDHB by western blot at 1 µg/mL, and HRP conjugated secondary antibody should be diluted 1:50,000 - 100,000.
<b>Expiration Date</b>	12 months from date of receipt.

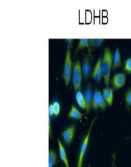


Antibody used in IHC on Human Placenta a...



See Immunoblot Data and Customer Feedback for more information

Antibody used in WB on Human pancreas at...



Green: LDHB  
Blue: DAPI  
See IF Data and Customer Feedback for more information

Antibody used in IHC on Human Lung at: 1...