

---

## Product Datasheet

### STK3 Antibody (orb1241099)

**Description**

STK3 Antibody

**Species/Host**

Rabbit

**Reactivity**

Human, Mouse, Rat

**Conjugation**

Unconjugated

**Tested**

ELISA, IHC, WB

**Applications**
**Immunogen**

Antibody produced in rabbits immunized with a synthetic peptide corresponding a region of human STK3.

**Target**

STK3

**Preservatives**

Purified antibody supplied in 1x PBS buffer with 0.09% (w/v) sodium azide and 2% sucrose.

**Form/Appearance**

Liquid

**Concentration**

batch dependent

**Storage**

For short periods of storage (days) store at 4°C. For longer periods of storage, store STK3 antibody at -20°C. As with any antibody avoid repeat freeze-thaw cycles.

**Note**

For research use only

**Application notes**

STK3 antibody can be used for detection of STK3 by ELISA at 1:312500. STK3 antibody can be used for detection of STK3 by western blot at 5.0 µg/mL, and HRP conjugated secondary antibody should be diluted 1:50,000 - 100,000.

**Clonality**

Polyclonal

**MW**

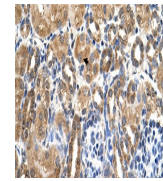
56 kDa

**Uniprot ID**
[Q13188](#)
**NCBI**
[NP\\_006272](#)
**Dilution Range**

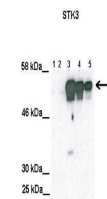
STK3 antibody can be used for detection of STK3 by ELISA at 1:312500. STK3 antibody can be used for detection of STK3 by western blot at 5.0 µg/mL, and HRP conjugated secondary antibody should be diluted 1:50,000 - 100,000.

**Expiration Date**

12 months from date of receipt.



Antibody used in IHC on Human kidney at ...



See Immunoblot 2, Data and Customer Feedback for more information

Antibody used in WB on transfected Cos-7...



Antibody used in WB on Human HepG2 at 5....