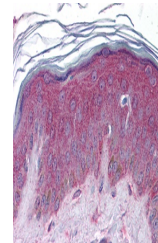

Product Datasheet

APC2 Antibody (orb1240961)

Description	APC2 Antibody
Species/Host	Rabbit
Reactivity	Human, Mouse, Rat
Conjugation	Unconjugated
Tested Applications	ELISA, WB
Immunogen	Antibody produced in rabbits immunized with a synthetic peptide corresponding a region of human APC2.
Target	APC2
Preservatives	Purified antibody supplied in 1x PBS buffer with 0.09% (w/v) sodium azide and 2% sucrose.
Form/Appearance	Liquid
Concentration	batch dependent
Storage	For short periods of storage (days) store at 4°C. For longer periods of storage, store APC2 antibody at -20°C. As with any antibody avoid repeat freeze-thaw cycles.
Note	For research use only
Application notes	APC2 antibody can be used for detection of APC2 by ELISA at 1:62500. APC2 antibody can be used for detection of APC2 by western blot at 0.5 µg/mL, and HRP conjugated secondary antibody should be diluted 1:50,000 - 100,000.
Clonality	Polyclonal
MW	244 kDa
Uniprot ID	Q9UJX6
NCBI	NP_005874
Dilution Range	APC2 antibody can be used for detection of APC2 by ELISA at 1:62500. APC2 antibody can be used for detection of APC2 by western blot at 0.5 µg/mL, and HRP conjugated secondary antibody should be diluted 1:50,000 - 100,000.
Expiration Date	12 months from date of receipt.



Antibody used in WB on Human Placenta at...



Antibody used in IHC on Human Skin.