

---

## Product Datasheet

### MICALL1 Antibody (orb1240856)

**Description**

MICALL1 Antibody

**Species/Host**

Rabbit

**Reactivity**

Human

**Conjugation**

Unconjugated

**Tested**

ELISA, WB

**Applications**

Antibody produced in rabbits immunized with a synthetic peptide corresponding a region of human MICALL1.

**Immunogen**
**Target**

MICALL1

**Preservatives**

Purified antibody supplied in 1x PBS buffer with 0.09% (w/v) sodium azide and 2% sucrose.

**Form/Appearance**

Liquid

**Concentration**

batch dependent

**Storage**

For short periods of storage (days) store at 4°C. For longer periods of storage, store MICALL1 antibody at -20°C. As with any antibody avoid repeat freeze-thaw cycles.

**Note**

For research use only

**Application notes**

MICALL1 antibody can be used for detection of MICALL1 by ELISA at 1:1562500. MICALL1 antibody can be used for detection of MICALL1 by western blot at 0.5 µg/mL, and HRP conjugated secondary antibody should be diluted 1:50,000 - 100,000.

**Clonality**

Polyclonal

**MW**

93 kDa

**Uniprot ID**
[Q8N3F8](#)
**NCBI**
[NP\\_203744](#)
**Dilution Range**

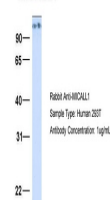
MICALL1 antibody can be used for detection of MICALL1 by ELISA at 1:1562500. MICALL1 antibody can be used for detection of MICALL1 by western blot at 0.5 µg/mL, and HRP conjugated secondary antibody should be diluted 1:50,000 - 100,000.

**Expiration Date**

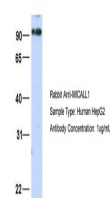
12 months from date of receipt.



Antibody used in WB on Human Liver at 0.001 µg/mL.

**MICALL1**


Antibody used in WB on Human 293T at 1 µg/mL.

**MICALL1**


Antibody used in WB on Human HepG2 at 1 µg/mL.

...