

---

## Product Datasheet

### ATG16L1 Antibody (orb1240680)

**Description**

ATG16L1 Antibody

**Species/Host**

Rabbit

**Reactivity**

Human, Rat

**Conjugation**

Unconjugated

**Tested**

ELISA, WB

**Applications**

Antibody produced in rabbits immunized with a synthetic peptide corresponding a region of human ATG16L1.

**Immunogen**
**Target**

ATG16L1

**Preservatives**

Purified antibody supplied in 1x PBS buffer with 0.09% (w/v) sodium azide and 2% sucrose.

**Form/Appearance**

Liquid

**Concentration**

batch dependent

**Storage**

For short periods of storage (days) store at 4°C. For longer periods of storage, store ATG16L1 antibody at -20°C. As with any antibody avoid repeat freeze-thaw cycles.

**Note**

For research use only

**Application notes**

ATG16L1 antibody can be used for detection of ATG16L1 by ELISA at 1:1562500. ATG16L1 antibody can be used for detection of ATG16L1 by western blot at 1 µg/mL, and HRP conjugated secondary antibody should be diluted 1:50,000 - 100,000.

**Clonality**

Polyclonal

**MW**

66 kDa

**Uniprot ID**
[Q676U5](#)
**NCBI**
[NP\\_060444](#)
**Dilution Range**

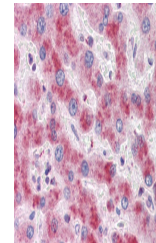
ATG16L1 antibody can be used for detection of ATG16L1 by ELISA at 1:1562500. ATG16L1 antibody can be used for detection of ATG16L1 by western blot at 1 µg/mL, and HRP conjugated secondary antibody should be diluted 1:50,000 - 100,000.

**Expiration Date**

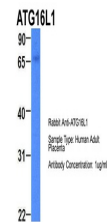
12 months from date of receipt.



Antibody used in WB on Human brain at 0...



Antibody used in IHC on Human Liver.



Antibody used in WB on Hum. Adult Placen...