

---

## Product Datasheet

### MDM4 Antibody (orb1240622)

**Description**

MDM4 Antibody

**Species/Host**

Rabbit

**Reactivity**

Human

**Conjugation**

Unconjugated

**Tested Applications**

ELISA, WB

**Immunogen**

Antibody produced in rabbits immunized with a synthetic peptide corresponding a region of human MDM4.

**Target**

MDM4

**Preservatives**

Purified antibody supplied in 1x PBS buffer with 0.09% (w/v) sodium azide and 2% sucrose.

**Form/Appearance**

Liquid

**Concentration**

batch dependent

**Storage**

For short periods of storage (days) store at 4°C. For longer periods of storage, store MDM4 antibody at -20°C. As with any antibody avoid repeat freeze-thaw cycles.

**Note**

For research use only

**Application notes**

MDM4 antibody can be used for detection of MDM4 by ELISA at 1:12500. MDM4 antibody can be used for detection of MDM4 by western blot at 1 µg/mL, and HRP conjugated secondary antibody should be diluted 1:50,000 - 100,000.

**Clonality**

Polyclonal

**MW**

55 kDa

**Uniprot ID**
[O15151](#)
**NCBI**
[NP\\_002384](#)
**Dilution Range**

MDM4 antibody can be used for detection of MDM4 by ELISA at 1:12500. MDM4 antibody can be used for detection of MDM4 by western blot at 1 µg/mL, and HRP conjugated secondary antibody should be diluted 1:50,000 - 100,000.

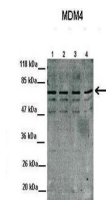
**Expiration Date**

12 months from date of receipt.






Antibody used in WB on Human HepG2 at 0....



See Immunoblot Data and Customer Feedback for more information

Antibody used in WB on Human MCF-7 at 1:...