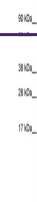
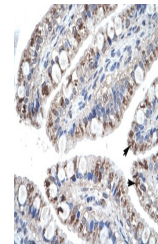

Product Datasheet

CCL18 Antibody (orb1240613)

Description	CCL18 Antibody
Species/Host	Rabbit
Reactivity	Human
Conjugation	Unconjugated
Tested Applications	ELISA, IHC, WB
Immunogen	Antibody produced in rabbits immunized with a synthetic peptide corresponding a region of human CCL18.
Target	CCL18
Preservatives	Purified antibody supplied in 1x PBS buffer with 0.09% (w/v) sodium azide and 2% sucrose.
Form/Appearance	Liquid
Concentration	batch dependent
Storage	For short periods of storage (days) store at 4°C. For longer periods of storage, store CCL18 antibody at -20°C. As with any antibody avoid repeat freeze-thaw cycles.
Note	For research use only
Application notes	CCL18 antibody can be used for detection of CCL18 by ELISA at 1:62500. CCL18 antibody can be used for detection of CCL18 by western blot at 0.5 µg/mL, and HRP conjugated secondary antibody should be diluted 1:50,000 - 100,000.
Clonality	Polyclonal
MW	10 kDa
Uniprot ID	P55774
NCBI	NP_002979
Dilution Range	CCL18 antibody can be used for detection of CCL18 by ELISA at 1:62500. CCL18 antibody can be used for detection of CCL18 by western blot at 0.5 µg/mL, and HRP conjugated secondary antibody should be diluted 1:50,000 - 100,000.
Expiration Date	12 months from date of receipt.



Antibody used in WB on Human Thymus at 0...



Antibody used in IHC on Human Intestine.