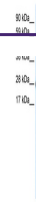
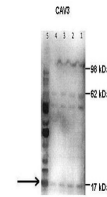

Product Datasheet

CAV3 Antibody (orb1240601)

Description	CAV3 Antibody
Species/Host	Rabbit
Reactivity	Canine, Human
Conjugation	Unconjugated
Tested Applications	ELISA, WB
Immunogen	Antibody produced in rabbits immunized with a synthetic peptide corresponding a region of human CAV3.
Target	CAV3
Preservatives	Purified antibody supplied in 1x PBS buffer with 0.09% (w/v) sodium azide and 2% sucrose.
Form/Appearance	Liquid
Concentration	batch dependent
Storage	For short periods of storage (days) store at 4°C. For longer periods of storage, store CAV3 antibody at -20°C. As with any antibody avoid repeat freeze-thaw cycles.
Note	For research use only
Application notes	CAV3 antibody can be used for detection of CAV3 by ELISA at 1:12500. CAV3 antibody can be used for detection of CAV3 by western blot at 0.5 µg/mL, and HRP conjugated secondary antibody should be diluted 1:50,000 - 100,000.
Clonality	Polyclonal
MW	17 kDa
Uniprot ID	P56539
NCBI	NP_001225
Dilution Range	CAV3 antibody can be used for detection of CAV3 by ELISA at 1:12500. CAV3 antibody can be used for detection of CAV3 by western blot at 0.5 µg/mL, and HRP conjugated secondary antibody should be diluted 1:50,000 - 100,000.
Expiration Date	12 months from date of receipt.

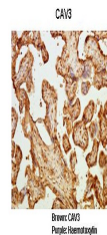


Antibody used in WB on Human Muscle at 0...



See Immunoblot Data and Customer Feedback for more information

Antibody used in WB on Human placenta at...



Antibody used in IHC on Human placental ...