
Product Datasheet

SREBF1 Antibody (orb1240592)

Description

SREBF1 Antibody

Species/Host

Rabbit

Reactivity

Human, Rat

Conjugation

Unconjugated

Tested

ELISA, IHC, WB

Applications
Immunogen

Antibody produced in rabbits immunized with a synthetic peptide corresponding a region of human SREBF1.

Target

SREBF1

Preservatives

Purified antibody supplied in 1x PBS buffer with 0.09% (w/v) sodium azide and 2% sucrose.

Form/Appearance

Liquid

Concentration

batch dependent

Storage

For short periods of storage (days) store at 4°C. For longer periods of storage, store SREBF1 antibody at -20°C. As with any antibody avoid repeat freeze-thaw cycles.

Note

For research use only

Application notes

SREBF1 antibody can be used for detection of SREBF1 by ELISA at 1:62500. SREBF1 antibody can be used for detection of SREBF1 by western blot at 0.25 µg/mL, and HRP conjugated secondary antibody should be diluted 1:50,000 - 100,000.

Clonality

Polyclonal

MW

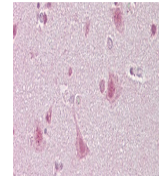
125 kDa

Uniprot ID
[P36956](#)
NCBI
[NP_001005291](#)
Dilution Range

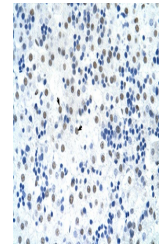
SREBF1 antibody can be used for detection of SREBF1 by ELISA at 1:62500. SREBF1 antibody can be used for detection of SREBF1 by western blot at 0.25 µg/mL, and HRP conjugated secondary antibody should be diluted 1:50,000 - 100,000.

Expiration Date

12 months from date of receipt.



Antibody used in IHC.



Antibody used in IHC on Human Liver.



Antibody used in WB on Human 293T at 0.2...