
Product Datasheet

GABRD Antibody (orb1240573)

Description

GABRD Antibody

Species/Host

Rabbit

Reactivity

Canine, Human, Mouse, Rat

Conjugation

Unconjugated

Tested Applications

ELISA, WB

Immunogen

Antibody produced in rabbits immunized with a synthetic peptide corresponding a region of human GABRD.

Target

GABRD

Preservatives

Purified antibody supplied in 1x PBS buffer with 0.09% (w/v) sodium azide and 2% sucrose.

Form/Appearance

Liquid

Concentration

batch dependent

Storage

For short periods of storage (days) store at 4°C. For longer periods of storage, store GABRD antibody at -20°C. As with any antibody avoid repeat freeze-thaw cycles.

Note

For research use only

Application notes

GABRD antibody can be used for detection of GABRD by ELISA at 1:62500. GABRD antibody can be used for detection of GABRD by western blot at 1.0 µg/mL, and HRP conjugated secondary antibody should be diluted 1:50,000 - 100,000.

Clonality

Polyclonal

MW

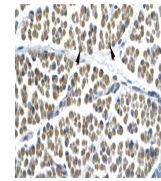
51 kDa

Uniprot ID
[O14764](#)
NCBI
[NP_000806](#)
Dilution Range

GABRD antibody can be used for detection of GABRD by ELISA at 1:62500. GABRD antibody can be used for detection of GABRD by western blot at 1.0 µg/mL, and HRP conjugated secondary antibody should be diluted 1:50,000 - 100,000.

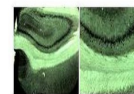
Expiration Date

12 months from date of receipt.



Antibody used in IHC on Human Muscle.

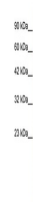
GABRD



4x 10x

See IHC 2 Data and Customer Feedback for more information

Antibody used in IHC on Rat brain section...



Antibody used in WB on Human HepG2 at 0....