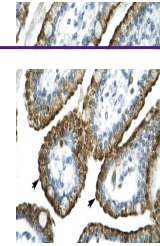

Product Datasheet

GABRP Antibody (orb1240571)

Description	GABRP Antibody
Species/Host	Rabbit
Reactivity	Canine, Human, Mouse, Rat
Conjugation	Unconjugated
Tested Applications	ELISA, WB
Immunogen	Antibody produced in rabbits immunized with a synthetic peptide corresponding a region of human GABRP.
Target	GABRP
Preservatives	Purified antibody supplied in 1x PBS buffer with 0.09% (w/v) sodium azide and 2% sucrose.
Form/Appearance	Liquid
Concentration	batch dependent
Storage	For short periods of storage (days) store at 4°C. For longer periods of storage, store GABRP antibody at -20°C. As with any antibody avoid repeat freeze-thaw cycles.
Note	For research use only
Application notes	GABRP antibody can be used for detection of GABRP by ELISA at 1:1562500. GABRP antibody can be used for detection of GABRP by western blot at 0.25 µg/mL, and HRP conjugated secondary antibody should be diluted 1:50,000 - 100,000.
Clonality	Polyclonal
MW	51 kDa
Uniprot ID	O00591
NCBI	NP_055026
Dilution Range	GABRP antibody can be used for detection of GABRP by ELISA at 1:1562500. GABRP antibody can be used for detection of GABRP by western blot at 0.25 µg/mL, and HRP conjugated secondary antibody should be diluted 1:50,000 - 100,000.
Expiration Date	12 months from date of receipt.



Antibody used in IHC on Human Intestine.



Antibody used in WB on Human Jurkat 0.2-...