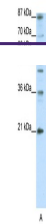
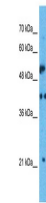

Product Datasheet

HTR1A Antibody (orb1240566)

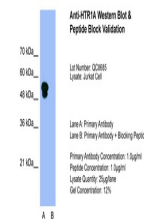
Description	HTR1A Antibody
Species/Host	Rabbit
Reactivity	Human
Conjugation	Unconjugated
Tested Applications	ELISA, WB
Immunogen	Antibody produced in rabbits immunized with a synthetic peptide corresponding a region of human HTR1A.
Target	HTR1A
Preservatives	Purified antibody supplied in 1x PBS buffer with 0.09% (w/v) sodium azide and 2% sucrose.
Form/Appearance	Liquid
Concentration	batch dependent
Storage	For short periods of storage (days) store at 4°C. For longer periods of storage, store HTR1A antibody at -20°C. As with any antibody avoid repeat freeze-thaw cycles.
Note	For research use only
Application notes	HTR1A antibody can be used for detection of HTR1A by ELISA at 1:62500. HTR1A antibody can be used for detection of HTR1A by western blot at 0.0625 µg/mL, and HRP conjugated secondary antibody should be diluted 1:50,000 - 100,000.
Clonality	Polyclonal
MW	46 kDa
Uniprot ID	P08908
NCBI	NP_000515
Dilution Range	HTR1A antibody can be used for detection of HTR1A by ELISA at 1:62500. HTR1A antibody can be used for detection of HTR1A by western blot at 0.0625 µg/mL, and HRP conjugated secondary antibody should be diluted 1:50,000 - 100,000.
Expiration Date	12 months from date of receipt.



Antibody used in WB on Human myometrial.



Antibody used in WB on Human Jurkat 1 ug...



Antibody used in WB on Jurkat 1.0 ug/ml ...