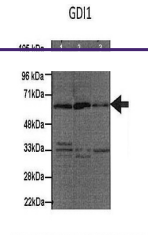


## Product Datasheet

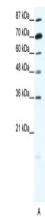
### GDI1 Antibody (orb1240547)

Description	GDI1 Antibody
<b>Species/Host</b>	Rabbit
<b>Reactivity</b>	Human
<b>Conjugation</b>	Unconjugated
<b>Tested Applications</b>	ELISA, WB
<b>Immunogen</b>	Antibody produced in rabbits immunized with a synthetic peptide corresponding a region of human GDI1.
<b>Target</b>	GDI1
<b>Preservatives</b>	Purified antibody supplied in 1x PBS buffer with 0.09% (w/v) sodium azide and 2% sucrose.
<b>Form/Appearance</b>	Liquid
<b>Concentration</b>	batch dependent
<b>Storage</b>	For short periods of storage (days) store at 4°C. For longer periods of storage, store GDI1 antibody at -20°C. As with any antibody avoid repeat freeze-thaw cycles.
<b>Note</b>	For research use only
<b>Application notes</b>	GDI1 antibody can be used for detection of GDI1 by ELISA at 1:312500. GDI1 antibody can be used for detection of GDI1 by western blot at 1.25 µg/mL, and HRP conjugated secondary antibody should be diluted 1:50,000 - 100,000.
<b>Clonality</b>	Polyclonal
<b>MW</b>	51 kDa
<b>Uniprot ID</b>	<a href="#">P31150</a>
<b>NCBI</b>	<a href="#">NP_001484</a>
<b>Dilution Range</b>	GDI1 antibody can be used for detection of GDI1 by ELISA at 1:312500. GDI1 antibody can be used for detection of GDI1 by western blot at 1.25 µg/mL, and HRP conjugated secondary antibody should be diluted 1:50,000 - 100,000.
<b>Expiration Date</b>	12 months from date of receipt.



See Technical Datasheet and Customer Feedback for more information

Antibody used in WB on Human, Mouse cell...



Antibody used in WB on Human HepG2 at 1....