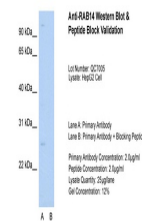

Product Datasheet

RAB14 Antibody (orb1240543)

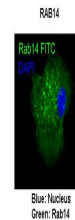
Description	RAB14 Antibody
Species/Host	Rabbit
Reactivity	Canine, Human, Mouse, Rat
Conjugation	Unconjugated
Tested Applications	ELISA, WB
Immunogen	Antibody produced in rabbits immunized with a synthetic peptide corresponding a region of human RAB14.
Target	RAB14
Preservatives	Purified antibody supplied in 1x PBS buffer with 0.09% (w/v) sodium azide and 2% sucrose.
Form/Appearance	Liquid
Concentration	batch dependent
Storage	For short periods of storage (days) store at 4°C. For longer periods of storage, store RAB14 antibody at -20°C. As with any antibody avoid repeat freeze-thaw cycles.
Note	For research use only
Application notes	RAB14 antibody can be used for detection of RAB14 by ELISA at 1:62500. RAB14 antibody can be used for detection of RAB14 by western blot at 0.25 µg/mL, and HRP conjugated secondary antibody should be diluted 1:50,000 - 100,000.
Clonality	Polyclonal
MW	24 kDa
Uniprot ID	P61106
NCBI	NP_057406
Dilution Range	RAB14 antibody can be used for detection of RAB14 by ELISA at 1:62500. RAB14 antibody can be used for detection of RAB14 by western blot at 0.25 µg/mL, and HRP conjugated secondary antibody should be diluted 1:50,000 - 100,000.
Expiration Date	12 months from date of receipt.



Antibody used in WB on Human HepG2 at 0....



Antibody used in WB on HepG2 at 2.0 µg/m...



Antibody used in IHC on Murin JAWS-II at...