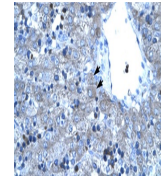
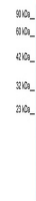

Product Datasheet

TAL1 Antibody (orb1240527)

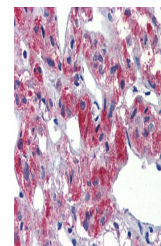
Description	TAL1 Antibody
Species/Host	Rabbit
Reactivity	Human
Conjugation	Unconjugated
Tested Applications	ELISA, IHC, WB
Immunogen	Antibody produced in rabbits immunized with a synthetic peptide corresponding a region of human TAL1.
Target	TAL1
Preservatives	Purified antibody supplied in 1x PBS buffer with 0.09% (w/v) sodium azide and 2% sucrose.
Form/Appearance	Liquid
Concentration	batch dependent
Storage	For short periods of storage (days) store at 4°C. For longer periods of storage, store TAL1 antibody at -20°C. As with any antibody avoid repeat freeze-thaw cycles.
Note	For research use only
Application notes	TAL1 antibody can be used for detection of TAL1 by ELISA at 1:312500. TAL1 antibody can be used for detection of TAL1 by western blot at 1.0-2.0 µg/mL, and HRP conjugated secondary antibody should be diluted 1:50,000 - 100,000.
Clonality	Polyclonal
MW	34 kDa
Uniprot ID	P17542
NCBI	NP_003180
Dilution Range	TAL1 antibody can be used for detection of TAL1 by ELISA at 1:312500. TAL1 antibody can be used for detection of TAL1 by western blot at 1.0-2.0 µg/mL, and HRP conjugated secondary antibody should be diluted 1:50,000 - 100,000.
Expiration Date	12 months from date of receipt.



Antibody used in IHC on Human Liver.



Antibody used in WB on Human Fetal Muscl...



Antibody used in IHC on Human Breast.