

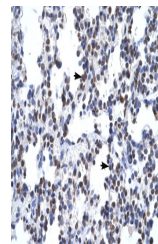
Product Datasheet

GCM1 Antibody (orb1240491)

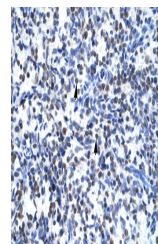
Description	GCM1 Antibody	
Species/Host	Rabbit	
Reactivity	Human	
Conjugation	Unconjugated	
Tested Applications	ELISA, WB	
Immunogen	Antibody produced in rabbits immunized with a synthetic peptide corresponding a region of human GCM1.	
Target	GCM1	
Preservatives	Purified antibody supplied in 1x PBS buffer with 0.09% (w/v) sodium azide and 2% sucrose.	
Form/Appearance	Liquid	
Concentration	batch dependent	
Storage	For short periods of storage (days) store at 4°C. For longer periods of storage, store GCM1 antibody at -20°C. As with any antibody avoid repeat freeze-thaw cycles.	
Note	For research use only	
Application notes	GCM1 antibody can be used for detection of GCM1 by ELISA at 1:312500. GCM1 antibody can be used for detection of GCM1 by western blot at 0.25 µg/mL, and HRP conjugated secondary antibody should be diluted 1:50,000 - 100,000.	
Clonality	Polyclonal	
MW	49 kDa	
Uniprot ID	Q9NP62	
NCBI	NP_003634	
Dilution Range	GCM1 antibody can be used for detection of GCM1 by ELISA at 1:312500. GCM1 antibody can be used for detection of GCM1 by western blot at 0.25 µg/mL, and HRP conjugated secondary antibody should be diluted 1:50,000 - 100,000.	
Expiration Date	12 months from date of receipt.	



Antibody used in WB on Human Placenta at...



Antibody used in IHC on Human Lung.



Antibody used in IHC on Human Spleen.