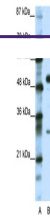

Product Datasheet

GCM1 Antibody (orb1240490)

Description	GCM1 Antibody
Species/Host	Rabbit
Reactivity	Human
Conjugation	Unconjugated
Tested Applications	ELISA, WB
Immunogen	Antibody produced in rabbits immunized with a synthetic peptide corresponding a region of human GCM1.
Target	GCM1
Preservatives	Purified antibody supplied in 1x PBS buffer with 0.09% (w/v) sodium azide and 2% sucrose.
Form/Appearance	Liquid
Concentration	batch dependent
Storage	For short periods of storage (days) store at 4°C. For longer periods of storage, store GCM1 antibody at -20°C. As with any antibody avoid repeat freeze-thaw cycles.
Note	For research use only
Application notes	GCM1 antibody can be used for detection of GCM1 by ELISA at 1:312500. GCM1 antibody can be used for detection of GCM1 by western blot at 0.25 µg/mL, and HRP conjugated secondary antibody should be diluted 1:50,000 - 100,000.
Clonality	Polyclonal
MW	49 kDa
Uniprot ID	Q9NP62
NCBI	NP_003634
Dilution Range	GCM1 antibody can be used for detection of GCM1 by ELISA at 1:312500. GCM1 antibody can be used for detection of GCM1 by western blot at 0.25 µg/mL, and HRP conjugated secondary antibody should be diluted 1:50,000 - 100,000.
Expiration Date	12 months from date of receipt.



Antibody used in WB on Human HepG2 at 0....