

Product Datasheet

IRF8 Antibody (orb1240488)

Description

IRF8 Antibody

Species/Host

Rabbit

Reactivity

Canine, Human, Mouse, Rat, Zebrafish

Conjugation

Unconjugated

Tested

ELISA, IHC, WB

Applications
Immunogen

Antibody produced in rabbits immunized with a synthetic peptide corresponding a region of human IRF8.

Target

IRF8

Preservatives

Purified antibody supplied in 1x PBS buffer with 0.09% (w/v) sodium azide and 2% sucrose.

Form/Appearance

Liquid

Concentration

batch dependent

Storage

For short periods of storage (days) store at 4°C. For longer periods of storage, store IRF8 antibody at -20°C. As with any antibody avoid repeat freeze-thaw cycles.

Note

For research use only

Application notes

IRF8 antibody can be used for detection of IRF8 by ELISA at 1:62500. IRF8 antibody can be used for detection of IRF8 by western blot at 0.5-2.0 µg/mL, and HRP conjugated secondary antibody should be diluted 1:50,000 - 100,000.

Clonality

Polyclonal

MW

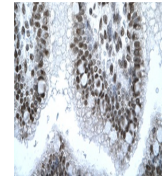
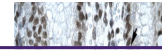
48 kDa

Uniprot ID
[Q02556](#)
NCBI
[NP_002154](#)
Dilution Range

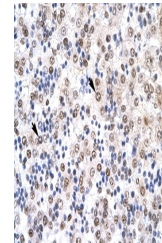
IRF8 antibody can be used for detection of IRF8 by ELISA at 1:62500. IRF8 antibody can be used for detection of IRF8 by western blot at 0.5-2.0 µg/mL, and HRP conjugated secondary antibody should be diluted 1:50,000 - 100,000.

Expiration Date

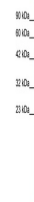
12 months from date of receipt.



Antibody used in IHC on Human Intestine.



Antibody used in IHC on Human Liver.



Antibody used in WB on Human Jurkat 0.2-...