
Product Datasheet

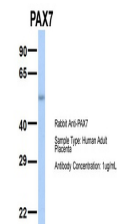
PAX7 Antibody (orb1240435)

Description	PAX7 Antibody
Species/Host	Rabbit
Reactivity	Human, Mouse, Rat
Conjugation	Unconjugated
Tested Applications	ELISA, WB
Immunogen	Antibody produced in rabbits immunized with a synthetic peptide corresponding a region of human PAX7.
Target	PAX7
Preservatives	Purified antibody supplied in 1x PBS buffer with 0.09% (w/v) sodium azide and 2% sucrose.
Form/Appearance	Liquid
Concentration	batch dependent
Storage	For short periods of storage (days) store at 4°C. For longer periods of storage, store PAX7 antibody at -20°C. As with any antibody avoid repeat freeze-thaw cycles.
Note	For research use only
Application notes	PAX7 antibody can be used for detection of PAX7 by ELISA at 1:62500. PAX7 antibody can be used for detection of PAX7 by western blot at 1 µg/mL, and HRP conjugated secondary antibody should be diluted 1:50,000 - 100,000.
Clonality	Polyclonal
MW	57 kDa
Uniprot ID	P23759
NCBI	NP_002575
Dilution Range	PAX7 antibody can be used for detection of PAX7 by ELISA at 1:62500. PAX7 antibody can be used for detection of PAX7 by western blot at 1 µg/mL, and HRP conjugated secondary antibody should be diluted 1:50,000 - 100,000.
Expiration Date	12 months from date of receipt.

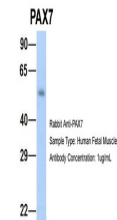




Antibody used in WB on Human HT1080 at 0...



Antibody used in WB on Hum. Adult Placen...



Antibody used in WB on Hum. Fetal Muscle...