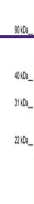
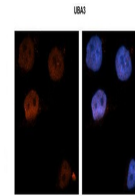

Product Datasheet

UBA3 Antibody (orb1240400)

Description	UBA3 Antibody
Species/Host	Rabbit
Reactivity	Human, Mouse, Rat
Conjugation	Unconjugated
Tested Applications	ELISA, WB
Immunogen	Antibody produced in rabbits immunized with a synthetic peptide corresponding a region of human UBA3.
Target	UBA3
Preservatives	Purified antibody supplied in 1x PBS buffer with 0.09% (w/v) sodium azide and 2% sucrose.
Form/Appearance	Liquid
Concentration	batch dependent
Storage	For short periods of storage (days) store at 4°C. For longer periods of storage, store UBA3 antibody at -20°C. As with any antibody avoid repeat freeze-thaw cycles.
Note	For research use only
Application notes	UBA3 antibody can be used for detection of UBA3 by ELISA at 1:1562500. UBA3 antibody can be used for detection of UBA3 by western blot at 1 µg/mL, and HRP conjugated secondary antibody should be diluted 1:50,000 - 100,000.
Clonality	Polyclonal
MW	52 kDa
Uniprot ID	Q8TBC4
NCBI	NP_003959
Dilution Range	UBA3 antibody can be used for detection of UBA3 by ELISA at 1:1562500. UBA3 antibody can be used for detection of UBA3 by western blot at 1 µg/mL, and HRP conjugated secondary antibody should be diluted 1:50,000 - 100,000.
Expiration Date	12 months from date of receipt.



Antibody used in WB on Human Pancreas at...



Antibody-IF (DAPI-Blue)

Antibody used in IHC on Human Brain at 1...



Antibody used in WB on Human NT-2 at 2 u...