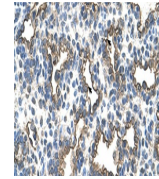
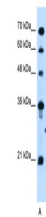

Product Datasheet

PDPN Antibody (orb1240356)

Description	PDPN Antibody
Species/Host	Rabbit
Reactivity	Human
Conjugation	Unconjugated
Tested Applications	ELISA, IHC, WB
Immunogen	Antibody produced in rabbits immunized with a synthetic peptide corresponding a region of human PDPN.
Target	PDPN
Preservatives	Purified antibody supplied in 1x PBS buffer with 0.09% (w/v) sodium azide and 2% sucrose.
Form/Appearance	Liquid
Concentration	batch dependent
Storage	For short periods of storage (days) store at 4°C. For longer periods of storage, store PDPN antibody at -20°C. As with any antibody avoid repeat freeze-thaw cycles.
Note	For research use only
Application notes	PDPN antibody can be used for detection of PDPN by ELISA at 1:62500. PDPN antibody can be used for detection of PDPN by western blot at 0.25 µg/mL, and HRP conjugated secondary antibody should be diluted 1:50,000 - 100,000.
Clonality	Polyclonal
MW	25 kDa, 12 kDa, 12 kDa, 25 kDa
Uniprot ID	Q86YL7
NCBI	NP_006465
Dilution Range	PDPN antibody can be used for detection of PDPN by ELISA at 1:62500. PDPN antibody can be used for detection of PDPN by western blot at 0.25 µg/mL, and HRP conjugated secondary antibody should be diluted 1:50,000 - 100,000.
Expiration Date	12 months from date of receipt.



Antibody used in IHC on Human Lung.



Antibody used in WB on Human Jurkat 0.2-...