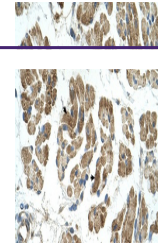
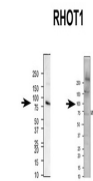

Product Datasheet

RHOT1 Antibody (orb1240334)

Description	RHOT1 Antibody
Species/Host	Rabbit
Reactivity	Canine, Human, Mouse
Conjugation	Unconjugated
Tested Applications	ELISA, IHC, WB
Immunogen	Antibody produced in rabbits immunized with a synthetic peptide corresponding a region of human RHOT1.
Target	RHOT1
Preservatives	Purified antibody supplied in 1x PBS buffer with 0.09% (w/v) sodium azide and 2% sucrose.
Form/Appearance	Liquid
Concentration	batch dependent
Storage	For short periods of storage (days) store at 4°C. For longer periods of storage, store RHOT1 antibody at -20°C. As with any antibody avoid repeat freeze-thaw cycles.
Note	For research use only
Application notes	RHOT1 antibody can be used for detection of RHOT1 by ELISA at 1:62500. RHOT1 antibody can be used for detection of RHOT1 by western blot at 0.25 µg/mL, and HRP conjugated secondary antibody should be diluted 1:50,000 - 100,000.
Clonality	Polyclonal
MW	71 kDa, 76 kDa, 80 kDa
Uniprot ID	Q8IXI2
NCBI	NP_060777
Dilution Range	RHOT1 antibody can be used for detection of RHOT1 by ELISA at 1:62500. RHOT1 antibody can be used for detection of RHOT1 by western blot at 0.25 µg/mL, and HRP conjugated secondary antibody should be diluted 1:50,000 - 100,000.
Expiration Date	12 months from date of receipt.



Antibody used in IHC on Human Muscle at ...



Antibody used in WB on mouse brain and h...



Antibody used in WB on Human Fetal Lung ...