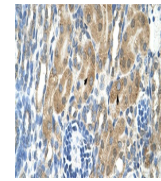
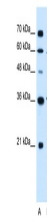

Product Datasheet

PARL Antibody (orb1240328)

Description	PARL Antibody
Species/Host	Rabbit
Reactivity	Canine, Human, Mouse, Rat
Conjugation	Unconjugated
Tested Applications	ELISA, IHC, WB
Immunogen	Antibody produced in rabbits immunized with a synthetic peptide corresponding a region of human PARL.
Target	PARL
Preservatives	Purified antibody supplied in 1x PBS buffer with 0.09% (w/v) sodium azide and 2% sucrose.
Form/Appearance	Liquid
Concentration	batch dependent
Storage	For short periods of storage (days) store at 4°C. For longer periods of storage, store PARL antibody at -20°C. As with any antibody avoid repeat freeze-thaw cycles.
Note	For research use only
Application notes	PARL antibody can be used for detection of PARL by ELISA at 1:312500. PARL antibody can be used for detection of PARL by western blot at 0.5 µg/mL, and HRP conjugated secondary antibody should be diluted 1:50,000 - 100,000.
Clonality	Polyclonal
MW	36 kDa, 42 kDa
Uniprot ID	Q9H300
NCBI	NP_001032728
Dilution Range	PARL antibody can be used for detection of PARL by ELISA at 1:312500. PARL antibody can be used for detection of PARL by western blot at 0.5 µg/mL, and HRP conjugated secondary antibody should be diluted 1:50,000 - 100,000.
Expiration Date	12 months from date of receipt.



Antibody used in IHC on Human kidney.



Antibody used in WB on Human Jurkat 0.5 ...