

---

## Product Datasheet

### CLCC1 Antibody (orb1240321)

**Description**

CLCC1 Antibody

**Species/Host**

Rabbit

**Reactivity**

Canine, Human, Mouse, Rat

**Conjugation**

Unconjugated

**Tested**

ELISA, IHC, WB

**Applications**
**Immunogen**

Antibody produced in rabbits immunized with a synthetic peptide corresponding a region of human CLCC1.

**Target**

CLCC1

**Preservatives**

Purified antibody supplied in 1x PBS buffer with 0.09% (w/v) sodium azide and 2% sucrose.

**Form/Appearance**

Liquid

**Concentration**

batch dependent

**Storage**

For short periods of storage (days) store at 4°C. For longer periods of storage, store CLCC1 antibody at -20°C. As with any antibody avoid repeat freeze-thaw cycles.

**Note**

For research use only

**Application notes**

CLCC1 antibody can be used for detection of CLCC1 by ELISA at 1:62500. CLCC1 antibody can be used for detection of CLCC1 by western blot at 1.25 µg/mL, and HRP conjugated secondary antibody should be diluted 1:50,000 - 100,000.

**Clonality**

Polyclonal

**MW**

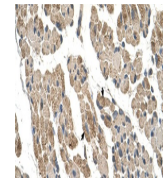
61 kDa

**Uniprot ID**
[Q96S66](#)
**NCBI**
[NP\\_001041675](#)
**Dilution Range**

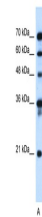
CLCC1 antibody can be used for detection of CLCC1 by ELISA at 1:62500. CLCC1 antibody can be used for detection of CLCC1 by western blot at 1.25 µg/mL, and HRP conjugated secondary antibody should be diluted 1:50,000 - 100,000.

**Expiration Date**

12 months from date of receipt.



Antibody used in IHC on Human Muscle.



Antibody used in WB on Human HepG2 at 1....