
Product Datasheet

EIF4EBP1 Antibody (orb1240310)

Description

EIF4EBP1 Antibody

Species/Host

Rabbit

Reactivity

Human, Mouse

Conjugation

Unconjugated

Tested Applications

ELISA, ICC, IF, WB

Applications
Immunogen

4E-BP1 antibody was raised against a 14 amino acid synthetic peptide from near the carboxy terminus of human 4E-BP1. The immunogen is located within the last 50 amino acids of 4E-BP1.

Target

EIF4EBP1

Preservatives

4E-BP1 Antibody is supplied in PBS containing 0.02% sodium azide.

Form/Appearance

Liquid

Concentration

1 mg/mL

Storage

4E-BP1 antibody can be stored at 4°C for three months and -20°C, stable for up to one year. As with all antibodies care should be taken to avoid repeated freeze thaw cycles. Antibodies should not be exposed to prolonged high temperatures.

Note

For research use only

Application notes

4E-BP1 antibody can be used for the detection of 4E-BP1 by Western blot at 2.5 - 10 µg/mL. Antibody can also be used for immunocytochemistry starting at 2 µg/mL. For immunofluorescence start at 20 µg/mL. Antibody validated: Western Blot in mouse samples; Immunocytochemistry in mouse samples and Immunofluorescence in mouse samples. All other applications and species not yet tested.

Isotype

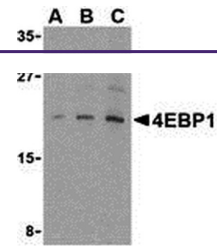
IgG

Clonality

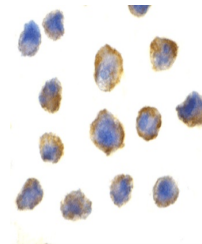
Polyclonal

Uniprot ID
[Q13541](#)
NCBI
[NP_004086](#)
Dilution Range

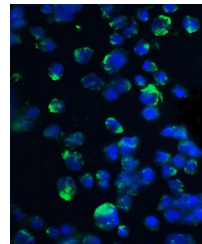
4E-BP1 antibody can be used for the detection of 4E-BP1 by Western blot at 2.5 - 10 µg/mL. Antibody can also be used for immunocytochemistry starting at 2 µg/mL. For immunofluorescence start at 20 µg/mL. Antibody validated: Western Blot in mouse samples; Immunocytochemistry in mouse samples



Western blot analysis of 4E-BP1 in 3T3 c...



Immunocytochemistry of 4E-BP1 in 3T3 cel...



Immunofluorescence of 4E-BP1 in 3T3 cell...