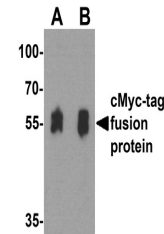


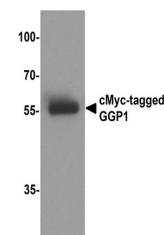
Product Datasheet

cMyc-tag Antibody (orb1240306)

Description	cMyc-tag Antibody
Species/Host	Rabbit
Reactivity	Tag
Conjugation	Unconjugated
Tested Applications	ELISA, IP, WB
Immunogen	cMyc-tag antibody was raised against a synthetic peptide containing EQKLISEEDL.
Preservatives	cMyc-tag antibody is supplied in PBS containing 0.02% sodium azide.
Form/Appearance	Liquid
Concentration	1 mg/mL
Storage	cMyc-tag antibody can be stored at 4°C for three months and -20°C, stable for up to one year.
Note	For research use only
Application notes	cMyc-tag antibody can be used for detection of cMyc-tag epitope-containing recombinant proteins by Western blot at 0.5 - 1 µ/ml.
Isotype	IgG
Clonality	Polyclonal
Dilution Range	cMyc-tag antibody can be used for detection of cMyc-tag epitope-containing recombinant proteins by Western blot at 0.5 - 1 µ/ml.
Expiration Date	12 months from date of receipt.



Western blot analysis of a cMyc-tag-cont...



Western blot analysis of 20ng of cMyc-ta...