

---

## Product Datasheet

### ACE2 Antibody (HRP) (orb1240300)

**Description**

ACE2 Antibody (HRP)

**Species/Host**

Rabbit

**Reactivity**

Human, Mouse, Rat

**Conjugation**

HRP

**Tested**

ELISA, IHC

**Applications**
**Immunogen**

Anti-ACE2 antibody (3217) was raised against a peptide corresponding to 18 amino acids near the carboxy terminus of human ACE2. The immunogen is located within the last 50 amino acids of ACE2.

**Target**

ACE2

**Preservatives**

ACE2 Antibody is supplied in PBS containing 0.02% sodium azide.

**Form/Appearance**

Liquid

**Concentration**

1 mg/mL

**Storage**

ACE2 antibody can be stored at 4°C for three months and -20°C, stable for up to one year. As with all antibodies care should be taken to avoid repeated freeze thaw cycles. Antibodies should not be exposed to prolonged high temperatures.

**Note**

For research use only

**Application notes**

IHC: 2 µg/mL Antibody validated:  
Immunohistochemistry in human samples. All other applications and species not yet tested

**Isotype**

IgG

**Clonality**

Polyclonal

**MW**

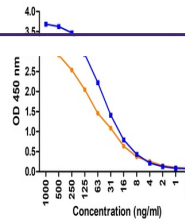
Predicted: 93kD  
Observed: 130 kD (7 N-linked glycosylation)

**Uniprot ID**
[Q9BYF1](#)
**NCBI**
[NP\\_068576](#)
**Dilution Range**

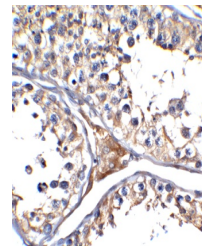
IHC: 2 µg/mL Antibody validated:  
Immunohistochemistry in human samples. All other applications and species not yet tested

**Expiration Date**

12 months from date of receipt.



ELISA Validation.  
Coating Antigen:  
immun...



Immunohistochemistry  
Validation of ACE-2...