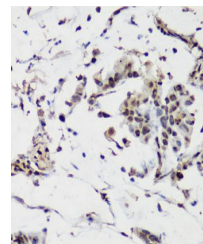


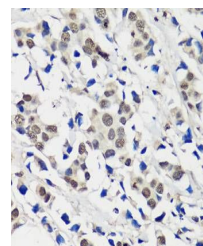
Product Datasheet

EZH2 antibody (orb12403)

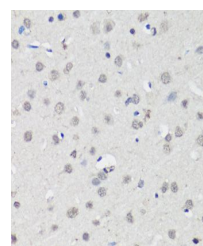
Description	Rabbit polyclonal antibody to EZH2
Reactivity	Human, Mouse
Conjugation	Unconjugated
Tested Applications	ICC, IF, WB
Immunogen	Recombinant fusion protein of human EZH2/KMT6(NP_001190176.1).
Preservatives	PBS with 0.01% thiomersal,50% glycerol,pH7.3.
Storage	Maintain refrigerated at 2-8°C for up to 2 weeks. For long term storage store at -20°C in small aliquots to prevent freeze-thaw cycles.
Note	For research use only
Isotype	IgG
Clonality	Polyclonal
MW	78-110kDa
Uniprot ID	Q15910
Dilution Range	WB: 1:500-1:2000, IF/ICC: 1:20-1:100
Expiration Date	12 months from date of receipt.



Immunohistochemical staining of human gastric tissue.



Immunohistochemical staining of human brain tissue.



Immunohistochemical staining of rat brain tissue.